

Congratulations on your purchase of our BigBlue product. The BigBlue Diving Light uses carefully selected materials that have met rigorous industry standards. With innovative manufacturing processes, and strict quality controls, we guarantee the reliability of all BigBlue Diving products.

Introduction

The CF 1000P Li ion Rechargeable Battery Changeable Focus LED Light delivers 1000 lumens of light output. It is a compact and versatile diving light, providing a 5X changeable focus from 7 °narrow beam to 37 °wide beam. It features a 4-level and SOS push button on the body that enables you to adjust the brightness and prolong the burn time according to each individual need. Or just in emergency to go to SOS to seek for help.

Features

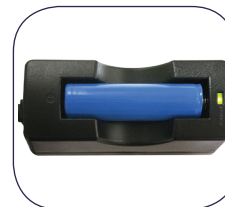
Our high output LED system delivers brilliant luminosity at 1000 lumens.

- The unique XML high intensity LED is energy efficient to guarantee a long burn time of up to 50,000 hours, reducing the need for frequent bulb replacement.
- The light can be attached to a lanyard.
- The 6500K white light reflects the true vibrant colors of the underwater surrounding while diving.
- The body can be twist opened easily to replace the old battery pack inside for long lasting performance.
- The product comes with a smart charger, enabling you to smart quick-charge in 2-3 hours.
- The push button not only makes it easy to change between the power output levels, but it is also designed to be insulated from all internal parts, eliminating the risk of leakage.

Charging the Battery

Place the Li ion battery inside the Smart Quick Charger. There is no need to discharge after use.

Charge time will depend on the remaining capacity in the battery and the surrounding temperature.



Maintenance and Transportation

- After each dive, always rinse with fresh water. If the diving light and the battery will not be used for a prolonged period of time (more than a month), remove the battery from the light.
- In rare cases of flooding, discontinue use. Turn the light off immediately, disconnect the battery, and rinse with fresh water. Let the component dry completely, and return it to BigBlue for service.
- Flooding damage cannot be repaired on site

Clean the light and Lubricate the O-Ring

- For good practice, put the light into fresh water for few hours after every dive.
- Dry it out and put the silicone grease on the O-Ring. Ready for other dive.

Limited Warranty

1. BigBlue guarantees the proper operation of this product by the original retail purchaser under normal and intended use.
2. This warranty applies only to the original retail purchaser, which does not cover commercial or rental use, and it is not transferable to third parties.
3. If the original retail purchaser detects defect in the materials or workmanship, return the product together with proof of purchase, including the date of purchase to an authorized BigBlue dealer or BigBlue.
4. The warranty covers a period of up to one year from the date of purchase. Warranty for rechargeable battery pack is valid for six months only.
5. This limited warranty is in lieu of all other warranties. No other person or party is authorized to assume for BigBlue any other liability in connection with the sales of this product.
6. This warranty will be voided if the product or any of its parts have been tempered with, repaired, modified, transformed, adapted, or damaged without authorization by BigBlue.
7. This warranty does not cover parts subjected to normal wear and tear, including and is not limited to the following: O-ring, battery pack, front glass (surface scratch or damage on impact).
8. This warranty does not cover damages due to impact, used in chlorinated or polluted waters, and extended exposure to heat sources.

Bossk International Company Limited Web: www.bigblue.com.hk
Email: customerservice@bigblue.com.hk Tel: (852) 3568 0773
MADE IN CHINA Patent Pending

bigblue®
THE BRIGHTER IDEA

CF 1000P INSTRUCTION MANUAL

LI ION RECHARGEABLE BATTERY CHANGEABLE FOCUS LED LIGHT

**1000
lumens**

**5X
Focusable**



Technical Specifications

Light source	: XML LED
Light output	: 100 Lm (level I), 250 Lm (level II), 500 Lm (level III), 1000 Lm (level IV)
Casing material	: Aluminum alloy. Anti-corrosive anodized
Power source	: Li ion Rechargeable battery pack 18650
Angle of light beam	: 7° narrow beam to 37° wide beam
Color temperature	: 6500K
Burn time	: 2hrs (level IV), 5 hrs (level III), 10 hrs (level II) and 20 hrs (level I)
Maximum depth	: 100 m tested
Size :	Dia. 39.5mm x L.172.1mm
Weight in air	: 250g (including battery)
Buoyancy in seawater	: -117g (including battery)
Switching system	: Push button with battery indicator
Front glass	: Tempered optical glass
Lanyard	: Included

Specifications subject to change without prior notice.

Using the Rechargeable Li ion Battery

- Intended to be used with the custom-made 18650 Li ion rechargeable battery only.
- Connect with the correct polarity (+ and -) only, incorrect connection can damage the unit.
- Fully charge the batteries before using for the first time.
- Use only the power adapters supplied with the charger. Using incompatible adapters may damage the charger or result in fire or electric shock.
- Charge time will depend on the remaining charge in the battery and the surrounding temperature.
- Do not charge near hot temperature, under direct sunlight, cover the charger with a blanket, or place under heavy pressure. If the temperature is too high, it may cause the battery to leak or rupture.
- When storing or carrying the battery, avoid direct contact with metal objects to avoid short circuit.
- The Li ion battery should not be dropped or be subjected to strong mechanical shock.
- Remove the battery from the light if it is not going to be in use for an extended period of time.
- Do not operate the battery or the charger if it has been damaged or subjected to shock.
- Do not dispose of in fire. Do not heat, deform, solder, disassemble or modify.
- Do not dispose of your rechargeable battery with general household waste. Check with your local collection system for electrical and electronic products.

Attaching the light to a lanyard

- Insert the lanyard on the bottom of the body.



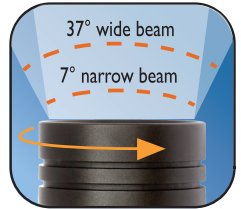
Replacing the Battery Pack Inside the body

Unscrew the body and then slide out the old battery pack.



Choosing between narrow beam to wide beam

Rotate the front head to change the beam angle accordingly.



Choosing between 4-Levels and SOS of output

Press the push button every time to choose the desired output level : I- output at 10%, II-output at 25%, III-output at 50%, IV-output at 100%.

For 4-Levels setting, press the push button each time to change the level of output accordingly.

For SOS setting, press the push button for 2 sec to get SOS effect and back to normal when you press the push button once again.

For OFF setting, press the push button one time after 1 sec of level selection or press the push button five times after 4-Levels setting.



Battery level indicator built-in

Color of LEDs change from the time being. It will change from blue to green and green to red. When the red led flashes, it reminds people to charge up the battery.

