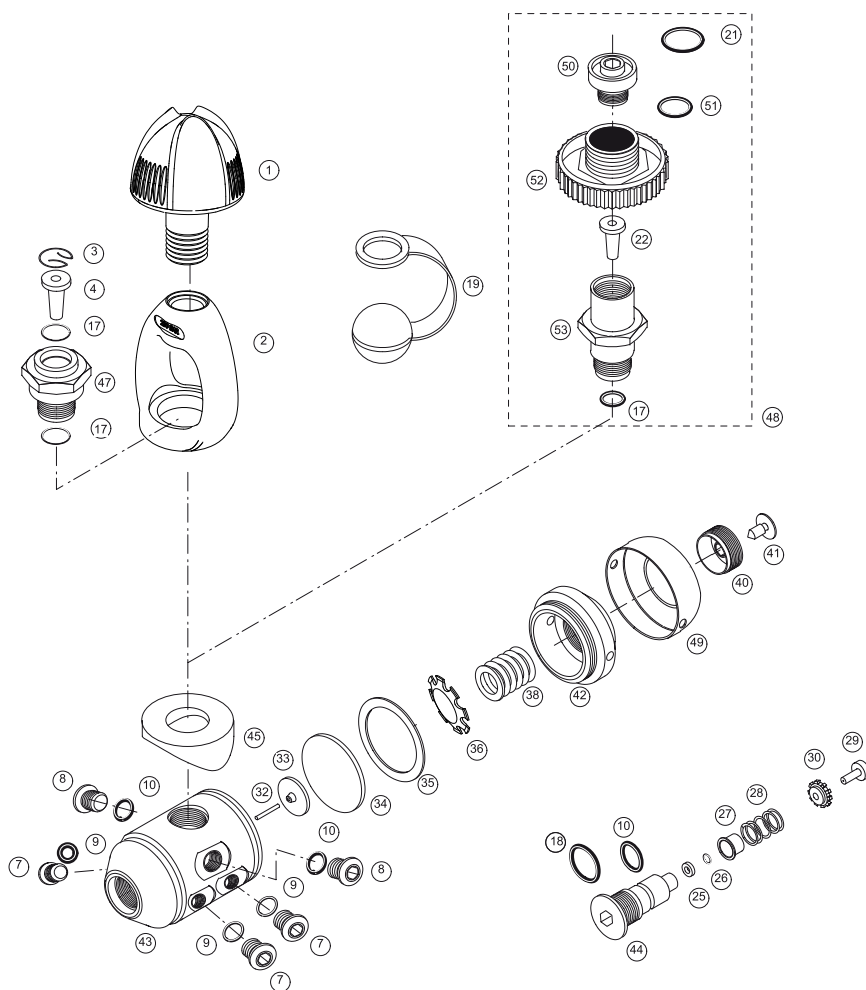


# 1° STADIO EROGATORE FIRST STAGE REGULATOR

M-SYNCHRO INT 230 M-SYNCHRO DIN 230

Seac Ref. 8610  
Seac Ref. 8615



|     |                                |                                  |           |
|-----|--------------------------------|----------------------------------|-----------|
| 1)  | Manopola                       | Handgrip                         | S500025   |
| 2)  | Staffa Synchro                 | Synchro yoke                     | S840010   |
| 3)  | Anello elastico                | Snap ring                        | S500029   |
| 4)  | Filtro conico INT              | INT Cone-shaped filter           | S500030   |
| 7)  | Tappo LP Synchro               | Synchro LP 3/8 port plug         | S850020   |
| 8)  | Tappo HP Synchro               | Synchro HP 7/16 port plug        | S850022   |
| 9)  | O-Ring 2031                    | 2031 O-Ring                      | S101017   |
| 10) | O-Ring 108                     | 108 O-Ring                       | S510022   |
| 17) | O-Ring 2037                    | 2037 O-Ring                      | S510021   |
| 18) | O-Ring 2056                    | 2056 O-Ring                      | S101024   |
| 19) | Tappo primo stadio             | Dust cap                         | S500024   |
| 21) | O-Ring 3043                    | 3043 O-Ring                      | S810024   |
| 22) | Filtro conico DIN              | DIN cone-shaped filter           | S500051   |
| 25) | Anello antiestrusore BK 2012   | Antiextruder washer BK 2012      | S500034   |
| 26) | O-Ring 2012                    | 2012 O-Ring                      | S150004   |
| 27) | Boccola fermo O-Ring           | O-Ring lock bush                 | S500035   |
| 28) | Molla ritorno pistoncino       | Return spring                    | S500036   |
| 29) | Pistoncino                     | HP seat / poppet                 | S500037   |
| 30) | Boccola guida pistoncino       | HP crown guide                   | S500037/B |
| 32) | Astina guida                   | Slide stem                       | S500038/B |
| 33) | Piattello spinta               | Thrusting cap                    | S500038   |
| 34) | Membrana primo stadio          | First stage diaphragm            | S500039   |
| 35) | Rondella tenuta membrana       | Diaphragm retainer washer        | S500040   |
| 36) | Piattello appoggio molla       | Cap setting spring               | S810014   |
| 38) | Molla taratura                 | Setting spring                   | S500044   |
| 40) | Ghiera regolazione             | Pressure adjusting ring nut      | S500046   |
| 41) | Sigillo rosso                  | Red seal                         | S720004   |
| 42) | Cappellotto M-Synchro          | M-Synchro cap                    | S860013   |
| 43) | Corpo primo stadio M-Synchro   | M-Synchro first stage body       | S860021   |
| 44) | Camera bilanciamento M-Synchro | M-Synchro balancing chamber      | S730005   |
| 45) | Sella                          | Saddle                           | S510018   |
| 47) | Bloccastaffa M-Synchro         | M-Synchro yoke nut               | S850011   |
| 48) | Kit DIN 230 bar M-Synchro      | M-Synchro DIN 230 bar kit        | S850025   |
| 49) | Anello 1° stadio               | First stage plastic ring         | S730003   |
| 50) | Raccordo volantino DIN 23 bar  | DIN handwheel connection 230 bar | S850003   |
| 51) | O-Ring 2043                    | 2043 O-Ring                      | S101030   |
| 52) | Volantino DIN 230 bar          | DIN handwheel 230 bar            | S850005   |
| 53) | Fermo volantino DIN 230 bar    | DIN handwheel lock 230 bar       | S850007   |