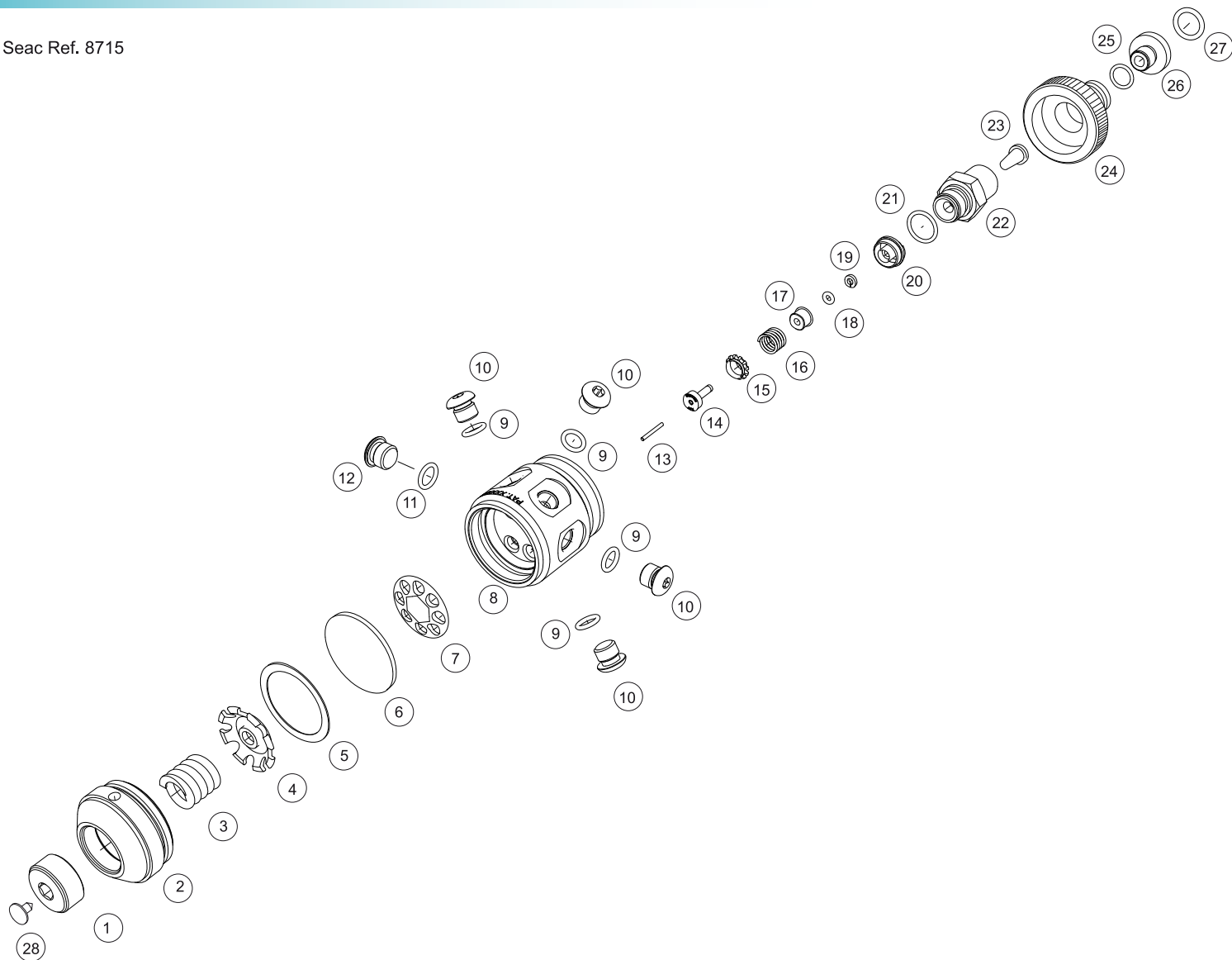


# 1° STADIO EROGATORE FIRST STAGE REGULATOR

N-SYNCHRO 230 BAR NITROX  
CE EN13949:2003

Seac Ref. 8715



1) Ghiera regolazione	Pressure adjusting ring nut	S500046
2) Cappello N-Synchro	N-Synchro cap	S860013
3) Molla taratura	Setting spring	S500044
4) Piattello appoggio molla	Cap setting spring	S810014
5) Rondella tenuta membrana	Diaphragm retainer washer	S500040
6) Membrana 1° stadio	First stage diaphragm	S500039
7) Piattello spinta	Thrusting cap	S810015
8) Corpo primo stadio N-Synchro	N-Synchro first stage body	S870021
9) O-Ring viton 2031	2031 viton O-Ring	S101017/V
10) Tappo L.P. Synchro	Synchro LP 3/8 port plug	S850020
11) O-Ring viton 108	108 viton O-Ring	S510022/V
12) Tappo H.P. Synchro	Synchro HP 7/16 port plug	S850022
13) Astina guida	Slide stem	S500038/B
14) Pistoncino	HP seat / poppet	S500037
15) Boccola guida pistoncino	HP crown guide	S500037/B
16) Molla ritorno pistoncino	Return spring	S500036
17) Boccola fermo O-Ring	O-Ring lock bush	S500035
18) O-Ring viton 2012	2012 viton O-Ring	S150004/V
19) Anello antiestrusore BK 2012	Antiextruder washer BK 2012	S500034
20) Camera bilanciamento N-Synchro	N-Synchro balancing chamber	S870005
21) O-Ring viton 2056	2056 viton O-Ring	S101024/V
22) Fermo volantino 230 BAR CE EN 13949:2003	DIN Handwheel lock 230 BAR CE EN 13949:2003	S870007
23) Filtro conico DIN	DIN cone-shaped filter	S500051
24) Volantino 230 BAR CE EN 13949:2003	Handwheel 230 BAR CE EN 13949:2003	S870008
25) O-Ring viton 2043	2043 viton O-Ring	S101030/V
26) Raccordo volantino 230 BAR CE EN 13949:2003	DIN handwheel connection 230 BAR CE EN 13949:2003	S870009
27) O-Ring viton 3056	3056 viton O-Ring	S870010/V
28) Sigillo verde	Nitrox green seal	S720004/V