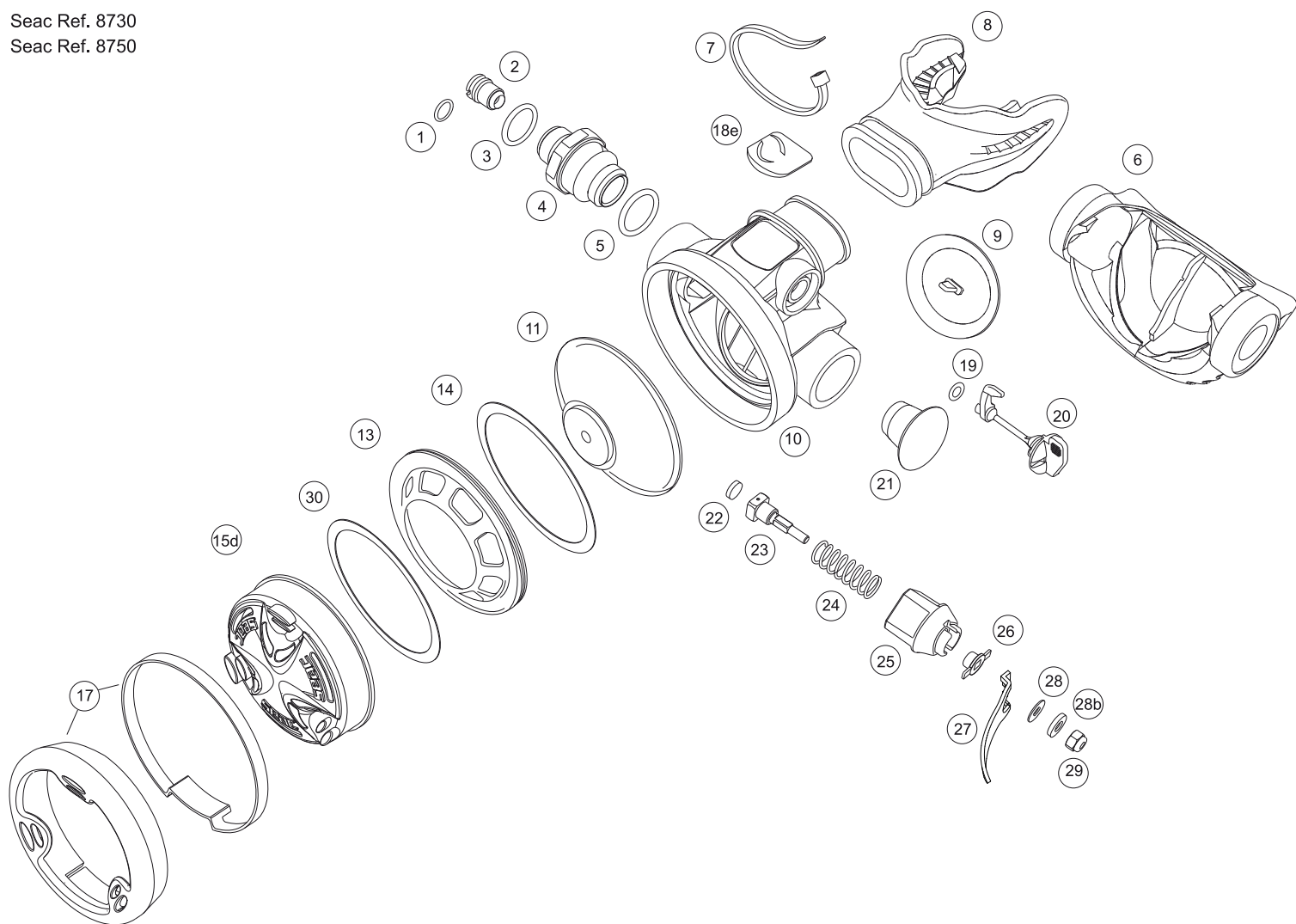


2° STADIO EROGATORE SECOND STAGE REGULATOR

N-SYNCHRO - N-SYNCHRO OCTO VERSIONE NITROX - NITROX VERSION

Seac Ref. 8730
Seac Ref. 8750



1) O-Ring Viton 2025 6,07 x 1,78	Viton O-Ring 2025 6,07 x 1,78	S500021/V
2) Ugello regolazione	Orifice	S842031
3) O-Ring Viton 2050 12,42 x 1,78	Viton O-Ring 2050 12,42 x 1,78	S800003/V
4) Attacco frusta	Hose connection	S842032
5) O-Ring Viton 2062 15,60 x 1,78	Viton O-Ring 2062 15,60 x 1,78	S77494/V
6) Baffo di scarico	Exhaust tee	S842033
7) Fascetta bocchaglio	Mouthpiece strap	S500023
8) Bocchaglio	Mouthpiece	236
9) Valvola di scarico	Exhaust valve	S842035
10) Cassa secondo stadio	Second stage body	S842004
11) Membrana completa	Complete diaphragm	S842003
13) Ghiera filettata interna	Internal retaining ring	S842007
14) Anello antifrizione	Antifriction washer	S842008
15d) Calotta Synchro Nitrox	Nitrox Synchro rubber cover	S842009V
17) Ghiera calotta completa	Complete cover retaining ring	S842011
18e) Etichetta N-Synchro	N-Synchro label	S842016
19) O-Ring Viton 2018 4,48 x 1,78	Viton O-Ring 2018 4,48 x 1,78	S540007/V
20) Deviatore completo	Complete jetavator	S842020
21) Tappo baffo	Exhaust tee plug	S842021
22) Pastiglia	Rubber seat	S842022
23) Alberino II° stadio	II° Stage stem	S842023
24) Molla II° stadio	II° Stage spring	S842024
25) Supporto leva	Lever support	S842025
26) Guida alberino	Insert housing	S842026
27) Leva	Lever	S842027
28) Rondella inox 3,2 x 7 x 0,5 UNI 6592	3,2 x 7 x 0,5 UNI 6592 stainless steel washer	S842028
28b) Rondella centratura alberino	Stem's truing washer	S842029
29) Dado autobloccante M3	M3 elastic stop nut	S500019
30) Anello antifrizione per calotta	Cover antifriction washer	S842019